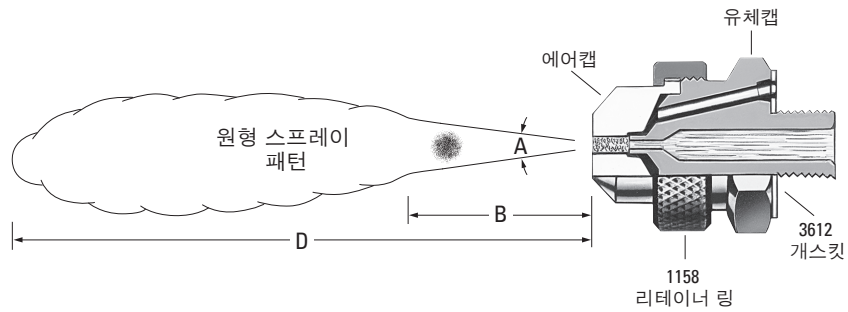


가

, 1/8J 1/4J



- “D”
- 가
- 가



1158 3612

* bar.

		(l/h)* (l/min)*																				
		0.7		1.5		2		3		4		*	*	A (°)	B (cm)	D (m)						
		l/h	l/min	l/h	l/min	l/h	l/min	l/h	l/min	l/h	l/min											
SU11	2050 + 67147	.70	2.5	15.6	1.1	6.4	11.9	1.4	6.4	13.9	2.7	6.2	23	3.5	7.8	28	.85	.70	13	30	2.7	
		.85	1.8	19.0	1.4	5.0	15.0	1.7	5.5	16.7	2.8	5.7	25	3.7	7.3	29	1.7	1.5	13	33	3.0	
		1.0	1.4	22	1.7	4.1	18.7	2.0	4.5	19.8	3.0	5.2	27	3.9	6.4	33	2.5	2.0	13	36	3.4	
		-	-	-	1.8	3.4	20	2.2	3.4	24	3.1	4.7	29	4.2	5.5	38	3.1	3.0	14	39	3.8	
		-	-	-	2.0	3.0	23	2.4	3.0	26	3.2	4.3	31	4.5	4.5	43	4.5	4.0	15	44	4.4	
		-	-	-	2.1	2.6	25	2.5	2.5	28	3.4	3.9	33	4.6	4.1	45						
		-	-	-	2.2	2.0	27	2.7	2.3	31	3.7	3.0	38	4.8	3.7	47						

(Drip Free™) DF 가 : SU11DF.





* bar.

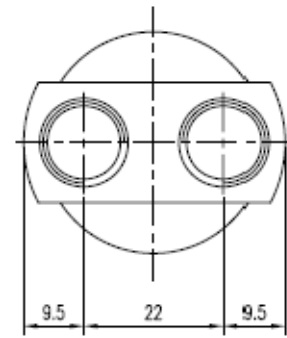
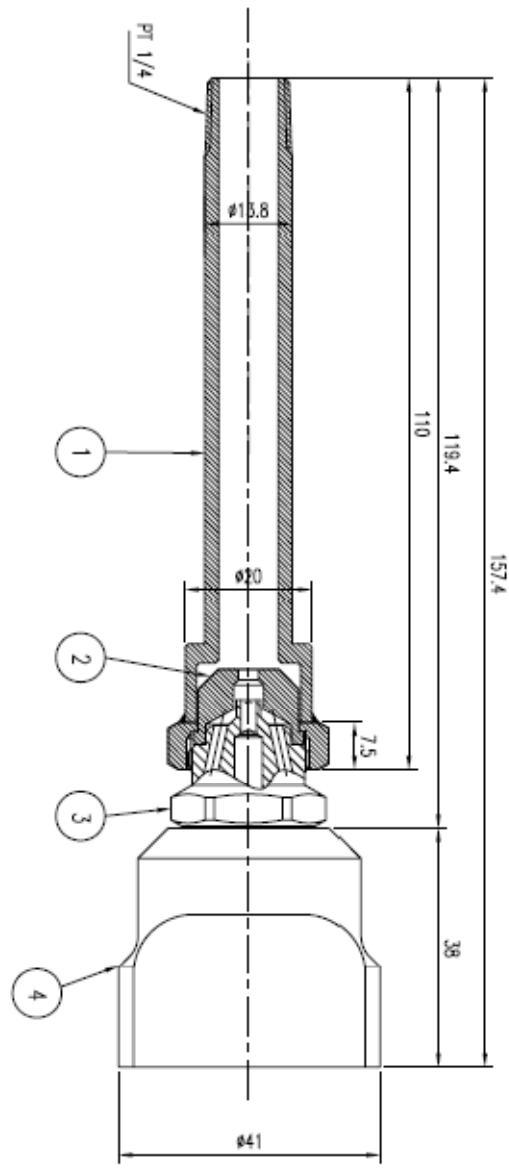
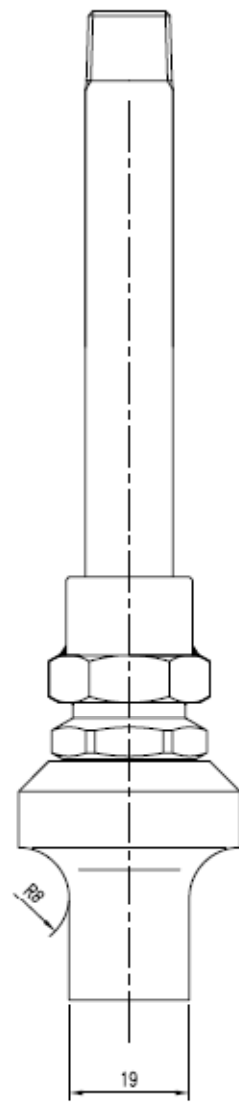
		(l/h)* (l/min)*														*	*	A (°)	B (cm)	D (m)						
		0.7		1.5		2		3		4																
		l/h	l/min	l/h	l/min	l/h	l/min	l/h	l/min	l/h	l/min															
SU12A	2050 + 73160	.70	2.5	18.7	1.4	5.7	27	1.7	6.7	29	2.2	9.2	34	2.8	11.9	39	.85	.70	12	43	3.7					
		.85	2.0	22	1.5	5.2	29	1.8	6.4	31	2.5	8.2	39	3.1	11.0	43						1.5	1.5	13	46	4.0
		1.0	1.6	26	1.7	4.8	32	2.0	5.9	34	2.8	7.2	44	3.4	10.1	47						2.4	2.0	13	48	4.3
		-	-	-	1.8	4.3	35	2.1	5.2	37	3.0	6.7	47	3.7	9.2	52						3.0	3.0	13	51	4.6
		-	-	-	2.0	3.9	37	2.2	4.8	40	3.1	6.3	49	3.9	8.4	58						3.9	4.0	15	56	5.2
		-	-	-	2.1	3.4	40	2.4	4.3	43	3.2	5.9	52	4.2	7.6	62										
		-	-	-	-	-	-	2.7	3.6	48	3.4	5.5	55	4.5	6.8	68										
SU12	2850 + 73160	.85	4.8	21	1.7	8.4	31	2.0	10.7	33	2.7	16.5	37	3.4	20	43	1.5	.70	12	48	4.0					
		1.1	4.1	27	1.8	7.5	35	2.1	9.8	37	2.8	15.4	38	3.7	18.4	47						2.5	1.5	13	51	4.3
		1.4	3.4	33	2.0	7.0	37	2.4	8.2	42	3.1	13.6	43	3.9	16.8	50						3.0	2.0	13	53	4.6
		1.5	3.1	35	2.2	5.7	44	2.7	6.8	48	3.4	11.8	49	4.2	15.2	55						3.4	3.0	14	56	4.9
		1.7	3.0	39	2.5	4.8	49	3.0	5.9	55	3.7	10.4	55	4.5	13.8	60						4.2	4.0	15	60	5.3
		1.8	2.9	41	2.8	4.1	54	3.2	5.0	59	3.9	9.1	61	4.8	12.4	65										
		2.0	2.8	44	3.1	3.6	59	3.5	4.1	65	4.2	7.9	65	4.9	11.8	68										
SU22B	40100 + 1401110	1.1	13.0	76	2.2	17.8	116	2.8	20	136	3.4	32	149	4.6	37	193	1.7	.70	18	66	4.9					
		1.4	8.9	91	2.5	13.1	130	3.1	16.3	149	3.9	25	170	5.3	29	220						2.8	1.5	20	76	6.1
		1.5	7.2	98	2.8	9.5	143	3.4	11.9	163	4.6	15.9	205	5.6	25	235						3.9	2.0	20	81	6.7
		1.7	5.8	105	3.1	7.0	157	3.9	7.0	187	5.3	9.1	240	6.0	21	250						5.3	3.0	21	91	7.9
		1.8	4.7	112	3.4	4.9	171	4.2	4.7	205	5.6	6.8	255	6.3	17.4	270						6.0	4.0	21	97	9.1
		2.0	3.6	119	3.5	4.2	178	4.6	3.0	220	6.0	5.0	275	6.7	14.0	290										
		2.1	2.7	127	-	-	-	-	-	-	6.3	3.6	290	7.0	11.0	305										
SU22	60100 + 1401110	.85	31	57	1.4	61	69	2.1	53	96	2.7	80	103	3.8	88	135	1.0	.70	17	61	4.9					
		1.0	25	66	1.5	54	76	2.4	41	112	3.0	69	117	4.2	73	156						1.8	1.5	18	69	5.8
		1.1	18.5	75	1.7	48	85	2.7	31	127	3.2	59	130	4.6	61	176						2.8	2.0	20	76	6.7
		1.3	12.9	85	1.8	41	93	2.8	26	136	3.5	49	146	4.9	48	196						3.5	3.0	20	79	7.0
		-	-	-	2.0	35	102	3.0	22	144	3.7	44	154	5.3	39	215						4.9	4.0	21	91	8.5
		-	-	-	2.1	30	110	-	-	-	3.8	37	161	5.6	31	240										
		-	-	-	2.2	25	119	-	-	-	3.9	35	170	6.0	23	260										
SU42	100150 + 1891125	1.0	44	86	1.4	125	79	2.0	123	108	2.2	199	88	3.0	250	99	1.0	.70	19	89	6.1					
		1.1	32	102	1.5	106	91	2.1	108	119	2.5	174	110	3.2	225	120						1.7	1.5	20	99	7.0
		-	-	-	1.7	87	105	2.2	95	130	2.8	146	133	3.5	205	141						2.4	2.0	21	104	7.6
		-	-	-	1.8	70	118	2.4	79	143	3.1	121	154	3.8	182	163						3.1	3.0	21	107	7.9
		-	-	-	2.0	55	130	2.5	64	155	3.2	108	166	4.1	159	184						3.8	4.0	22	117	9.1
		-	-	-	-	-	-	2.7	52	166	3.4	95	176	4.6	121	225										
		-	-	-	-	-	-	2.8	42	178	3.5	84	187	4.9	93	255										

(Drip Free™)

DF 가 : SU11DF.



NO.	DATE	REVISION & DESCRIPTION	REVISED	CHECKED
Δ				
Δ				



- Note
1. 가공후 가공면에 필히 Burr 제거 하시오.
 2. 지시없는 R=0.1
 3. 지시없는 C=0.1
 4. 나사부위는 전용 게이지로 Check 하시오.
 5. 항상 일정한 부위에 Marking 하시오.
 6. Marking 깊이에 주의 하시오.
 7. Orifice 및 Hole 가공시 전적으로에 주의 하시오.
 8. 제작시 변경사항은 도면 표시후 기술부로 밀히 반납 바랍니다.

지시의 불명치수	절삭가공치수의 지시외 일반치수 허용치 (KS B 0412 중급)						SPECIFICATION	
	구분	0.5미만 3이하	3를초과 6이하	6를초과 30이하	30를초과 120이하	120를초과 1000이하	PRESSURE (XXX)	SPRAY ANGLE (±5°)
	허용치	40.1	40.2	40.3	40.5	40.8	(XXX)	(XXX) ~ (XXX) ~ (XXX)
지시의 모서리부분	SURFACE ROUGHNESS(RS B 0617)						CAPACITY (l/min ±5%)	
C=	다듬질기호	~	▽	▽▽	▽▽▽	▽▽▽▽	(kg/cm ²)	
R=	Rmax		100S	25S	6.3S	0.8S		

ITEM	COMPONENT	MATERIAL	QTY	REMARKS
4	SUS316	SUS304		
3	PF 100150SS	SUS304		
2	PA 189115	SUS304		
1	1/4 PIPE CAP	SUS304		

DESC. 1/4IBC+RE110L+SUA2-SS

AIR ATOMIZING NOZZLE

APP. BR.	CH. BR.	DES. BR.	Y.Y.LIM
----------	---------	----------	---------

CUSTOMER : POSCO

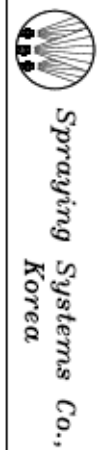
ASSY. DWG NO. : 6887

USA DWG. NO. : 6887

SCALE : 1/1

DATE : 2011.06.03

DWG NO. 1-4IBC ASSY



Spraying Systems Co., Korea